

## [Aoba Japan International School Musical Theatre Summer Camp](#)

Aoba-Japan International School offers students the life-changing opportunity to learn, practice, and perform under the guidance of professional faculty in the field at Musical Theatre Summer Camp. The camp provides two different programs based on the student grade levels.

- 1 week Rising Star Camp for current Grade 1 to 4th graders, 7/15~7/19, 2024
- 2 weeks Mainstage Camp for current Grade 5 to 11th graders, 7/22~8/2, 2024

### **Rising Star Camp - Camp Date: July 15 - 19. A Performance on Jul 19, 2024**

**Current Grade 1 - Grade 4, Max 35 students**

**Fee includes professional instructors, & Stage Facilities.**

Cost:

¥ 70,000/5 days, Early Bird Special Registration(Sign-up 4 March ~ 25 March)\*Aoba Students Only

¥ 75,000/5 days, Regular Registration (Sign-up 26 March ~ 20 May)

¥ 80,000/5 days, Late Registration, sessions maybe full at this moment (Sign-up 21 May ~ 31 May )

Lunch: ¥ 7,500/5 days

Registration fee: ¥ 11,000 (Non-Aoba students, First time only)

School Bus (Round Trip only): ¥ 15,000/5 days: Please pick up the bus stop from the bus routes.

A five-day Rising Star Camp (M-F, 09.00 to 15.00) designed for NEW G2-5 students to promote confidence and collaboration skills in singing, movement, and storytelling. The program focuses on ensemble singing and dancing learning the materials from famous Broadway Musicals such as Annie, Lion King, Frozen, and more. The Rising Stars ensemble culminates the week with the Family Showcase Concert, their musical presentation of songs, and scenes from a featured musical show. Rising Star camp starts budding performers on a lifelong path of art appreciation through creative group play in a fun and supportive environment.

### **Mainstage Camp - Camp Date - July 22 - August 2. A Show on August 2, 2024**

**Current Grade 5 - Grade 11, Max 20 students**

**Fee includes costume, professional instructors, & Stage Facilities**

Cost:

¥ 145,000/10 days, Early Bird Special Registration (Sign-up 4 March ~ 25 March)\*Aoba Students Only

¥ 155,000/10 days, Regular Registration( Sign-up 26 March ~ 20 May)

¥ 165,000/10 days, Late Registration, No guarantee of availability (Sign-up 21 May ~ 31 May )

Lunch: ¥ 7,500/5 days

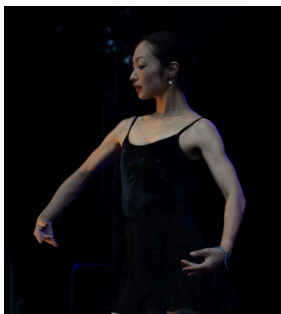
Registration fee: ¥ 11,000 (Non-Aoba students, First time only)

School Bus (Round Trip only): ¥ 15,000/5 days: Please pick up the bus stop from the bus routes.

Main Stage Camp is a two-week camp (M-F, 09.00 to 15.00) designed for NEW G6-G12 teens. The camp will produce a fully-staged musical from the audition, rehearsal to performance including sets and costumes. The students in this camp will immerse themselves in the world of Musical Theatre: acting, singing, and dancing every day, developing their skills working with accomplished professionals in staging, choreography, and music direction. All students will have a chance to work with a professional vocal coach to develop their singing voices and work with a professional dance and body coordinator to enhance their dance skills. The students in camp will also be involved in building/painting the sets. The camp will conclude with the family showcase performance on the final day of camp. All the classes will be taught in English.

## Instructors

### **Nami Holderman**



Nami began classical ballet training at the age of 5 with Matsuyama Ballet Company and continued her training with numerous teachers and studios throughout her life. In 1994, she moved to the USA to study dance and academics, receiving a B.A. in International Business and Psychology and later received a MEd in the Globalization of Education. During her years in the US, she studied ballet and modern dance under the tutelage of major dance mentors including Katherine Horn, Mary Anne Mee, Patricia Mc Bride, and Jean-Pierre Bounnefoux. 1997 she received a scholarship from the Joffrey Ballet School in NYC. From 1998-2000 she danced professionally with the

North Carolina Dance Theatre, and from 1999-2000 with The Moving Poets. She has taught ballet and creative movement as well as choreographed for numerous ballet schools in the US, including as an adjunct professor at Point Park University of the Performing Arts in Pittsburgh, Pennsylvania from 2004 - 2013. Returning to Tokyo in 2013 she has been a Performing Arts teacher at Aoba-Japan International School. Nami is currently researching the link between EQ (Emotional Intelligence) and Dance through kinesthetic empathy.

### **Dr. Kensuke Hakoda**



Dr. Hakoda is currently an instructor at Aoba Japan international school. Prior to Aoba, he was a professional conductor of symphony orchestras and musicals, and Professor/teacher for over 20 years in the United States. Dr. Hakoda has directed Musical Theatres and Operas for professional companies as well as community based theater / schools. He has over 40 shows in his credits. In addition, Dr.Hakoda is also known for his talent as a composer, with over 20 works to his credit. He has won a number of awards and honors as a composer, including the 1998 Claude T. Smith Phi Beta Mu

Composition Contest, the 1996 MMEA Collegiate Composition Contest and a Departmental Distinction at St. Olaf College. Hakoda also received the 2003 Outstanding Young Band Director Award from Kansas Bandmasters Association and was named as the 2014 Kansas Federated Music Club “Composer/ Conductor of the Year.” Recently he produced a CD “This is me!”, for a professional singer, Deris Takagi. The CD includes musical covers and his original songs. Dr. Hakoda holds a doctor of Education degree from Columbia University. Master of Music Degree from Wichita State university, and Bachelor of Music degree from St. Olaf College.

## **Mizuho Inagawa**



Born in April 1996. The 64th and 66th All Japan Student Music Competition Tournament Junior High School Tokyo Division 2nd Place, High School Division Special recognition Award. Selected for its national competition. In 2011, she was awarded by the Mitaka City Board of Education for her accomplishment. She received 1st place in the junior high school division of the 13th Japan Performer's Competition. She also received the Yamaha Award and the Kamakura City Board of Education Award, Bronze prize at the 13th and 14th Chopin International Piano Competition in Asia, and 3rd place in category C at the 3rd Hanoi International Piano Competition (Vietnam). She performed Chopin's Piano Concerto No. 1 with the Hanoi Symphony Orchestra in the final round. Inagawa is a graduate of Toho Gakuen University Music School for Children, Toho Girls High School Music Department, and Toho Gakuen University Music Faculty Piano Department. She has studied modern piano under Kana Ozawa, Kazumi Takagi, Sachi Akutsu, Takashi Saiki, and Shigeo Neriki. She has studied fortepiano under Chie Hirai. Studied the harpsichord under Chiyoko Arita. Studied chamber music under Kazuoki Fujii and Katsushige Sato. She has also taken lessons with Dan Tai Son, Mikhail Voskresenski, Bronislava Kavala, Alexei Lyubimov, Tobias Koch, and Piet Kuiken.

## アオバ・ミュージカルシアターキャンプ

アオバ・ジャパンインターナショナルは、ミュージカルシアターサマーキャンプにおいて、プロの講師陣の指導のもとで学び、練習し、演じるという、人生を変えるような機会を子供達に提供します。このキャンプは、生徒の学年に応じて2種類のプログラムが用意されています。

- 1週間のライジングスターキャンプ(現小学1年生～4年生)
- 2週間のメインステージキャンプ(現小学5年生～高校2年生)

「ライジングスターキャンプ」は、現在の小学1～4年生を対象とした5日間(月～金、午前9時～午後3時)のキャンプで、歌、踊り、ストーリーテリング(演劇)における自信とコラボレーションスキルを促進することを目的としています。このプログラムでは、アニメ、ライオンキング、フローズンなどの有名なブロードウェイミュージカルから抜粋された教材で、歌とダンスのアンサンブルに重点を置いています。「ライジングスター」のアンサンブルは、一週間のトレーニングの最後にミュージカルショーの歌とシーンをご家族に披露します。ライジングスター・キャンプは、楽しく協力的な環境下で、創造的なグループプレイを通し、新進のパフォーマーたちが生涯にわたって芸術鑑賞の道を歩み始めるきっかけを提供します。



「メインステージキャンプ」は、ティーンエイジャー、現在の小学5～11年生を対象とした2週間のキャンプです(月～金、午前9:00～午後3:00)。このキャンプでは、オーディション、リハーサル、セットや衣装を含む過程を経て、フルステージのミュージカルを制作します。

キャンプに参加する生徒は、ミュージカル・シアターの世界に没頭し、毎日演技、歌、ダンスを学び、演出、振付、音楽指導の熟練したプロと一緒にスキルを高めていきます。また、プロのヴォーカルトレーナーによる歌唱指導や、プロのダンス&ボディコーディネーターによるダンス指導も受けられます。また、セットの製作/塗装やコスチューム制作にも携わります。

\*キャンプの最終日に、保護者の方を招待してのパフォーマンス

スでキャンプを終了いたします。

\*クラスは全て英語での授業になります。



